

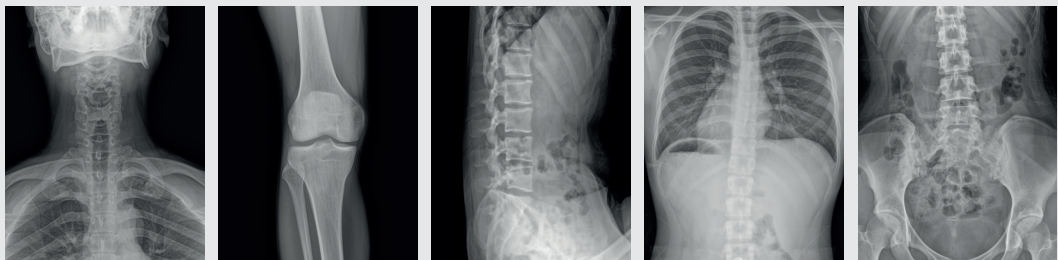


a-Si TFT Digital X-Ray Detectors

17HQ701G | 14HQ701G | 10HQ701G

Excellent Image Quality¹⁾

Get Clear Images with a-Si TFT

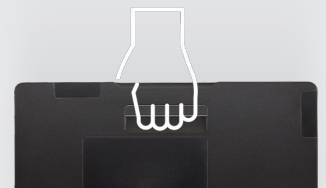


1) The product images shown are for illustration purposes only and may not be an exact representation of the product.

Increased Portability and Durability

Improved Design (Handle | Side Chamfer)²⁾ | Lightweight

LG Digital X-ray models 17HQ701G, 14HQ701G, and 10HQ701G weigh 3.7kg, 3.2kg, and 1.8kg³⁾, respectively, and feature rear-sided handles with sculpted handgrips and chamfers for added portability. With Digital X-ray devices increasingly being used outside hospital imaging rooms for emergency situations, mobility and practicality have become key areas of focus for optimizing medical practitioner workflows.



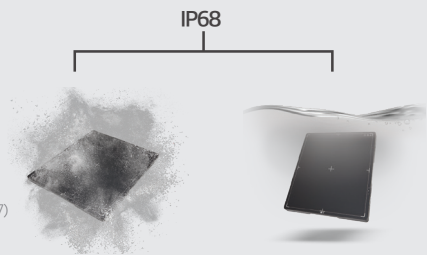
4)

2) The 10HQ701G consists of a 3-sided chamfer handle and the 14/17HQ701G consists of a 4-sided chamfer handle.
3) Listed weight specifications refer to the product with battery included.

4) The image is shown for illustrative purposes only and may not be an exact representation of the product.

IP68: Water Resistant & Dust-Tight | Enhanced Load Weight

The LG Digital X-ray Detector is IP68 rated and therefore protected against harmful contaminants such as water, dust and humidity. Its Level 6 dust-tight rating means that the device is protected against the ingress of dust, while its Level 8 water resistance rating means that it can withstand submersion for up to 30 minutes⁵⁾. Additionally, LG DXD with a-Si TFTs now come engineered with a 400kg load capacity and a 200kg point weight⁶⁾, a noticeable improvement over previous models.⁷⁾



5) Tested under controlled laboratory conditions with an IP68 rating. Water resistant up to 1 meter for 30 minutes. Dry before using. Do not charge while wet.
6) Max uniform load and max point load when tested for 60 seconds.
7) Maximum Load Weight for 14HK701G / 17HK701G / 17HK700G models - Full (Uniform Load) : 300kg / Local (Point Load) : 100kg

Simplified Workflow

Reduced Image Transfer Times | Extended Battery Life | Hot Swap | OLED Display

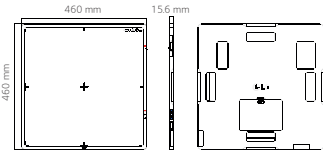
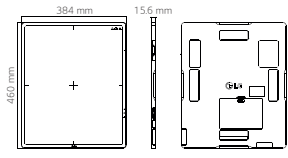
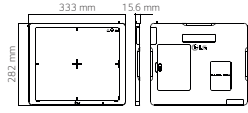
LG Digital X-ray Detector delivers 1.5sec and 2sec⁸⁾ transfer speeds for wired connections and wireless connections, respectively, which help to reduce patient wait times and increase workflow efficiency. Its bright OLED display lets users monitor device status in real time and make necessary adjustments. It also features 7.5 hours on average⁹⁾ of battery life, which allows for up to 300 X-ray images on a single charge and can continue working up to a minute when swapping out batteries to ensure smooth image processing in emergency and medical situations.



8) Full Image Transfer (Typ): 17HQ701G is 1.5 sec (Wired) / 2.5 sec (Wireless). 10/14HQ701G is 1.5 sec (Wired) / 2 sec (Wireless).
9) Measured by irradiating images during a 90-second cycle (consisting of standby mode, x-ray exposure, and image acquisition), obtaining approximately 300 shots. Actual battery usage time and performance may vary depending on network connectivity and application usage.

Specifications

Digital X-ray Detector with a-Si TFT

Model		17HQ701G (17 x 17-inch)	14HQ701G (14 x 17-inch)	10HQ701G (10 x 12-inch)
Dimension / Weight (Including battery)		460 mm x 460 mm x 15.6 mm 	384 mm x 460 mm x 15.6 mm 	282 mm x 333 mm x 15.6 mm 
		3.7 kg (8.2 lbs)	3.2 kg (7.1 lbs)	1.8 kg (4 lbs)
Intended Use		General Radiography		
TFT Type		a-Si		
Scintillator		CsI		
Pixel Pitch		140 μm		
Image Area	Number of Pixels	3072 x 3072 pixels	2500 x 3052 pixels	2048 x 1792 pixels
	TFT Active Area	430.08 x 430.08 mm	350.0 x 427.28 mm	286.72 x 250.88 mm
MTF	MTF @ 0.5lp/mm (Typ.)	84%		
A/D Conversion		16 bit		
Data Output		16 bit		
Communication	Type	Wired / Wireless		
	WLAN	IEEE802.11a/b/g/n/ac, 2.4GHz/5GHz		
	Auto Exposure Detection	Yes		
Cycle Time		4.5 sec (Wired) / 5 sec (Wireless)		
Full Image Transfer (Typ.) *Without window time		1.5 sec (Wired) / 2.5 sec (Wireless)	1.5 sec (Wired) / 2 sec (Wireless)	
Durability	Maximum Load Weight	Full (Uniform Load) : 400 kg (881.8 lbs) Local (Point Load) : 200 kg (440.9 lbs)		
	Watertightness	IP68		
	Sensor Protection Plate	Carbon Fiber Plate		
Battery	Operation Time	300 shots / 7.5 hrs (Typ.) (Condition : Cycle Time 90 sec)		
	Charging Time	3 hrs (Typ.)		
	Hot Swap	Yes (1 Min)		
Accessories	Cable	Power Cord, Main Cable 7 m (LAN Cable, Sync Cable Option)		
	Other	Battery Charger		
		2 x Battery Packs Control Box		

Acquisition Workstation Software

Installation Requirement	OS	Microsoft Windows 10 (64 bit)
	DB	MariaDB
	Processor Options	Intel CPU Desk 6 th gen i5 or above
	RAM	8 GB
	HDD	512 GB



LG Electronics Inc.

<https://www.lg.com/global/business/virtual-showroom/medical-display>

Copyright © 2022 LG Electronics. All Rights Reserved.