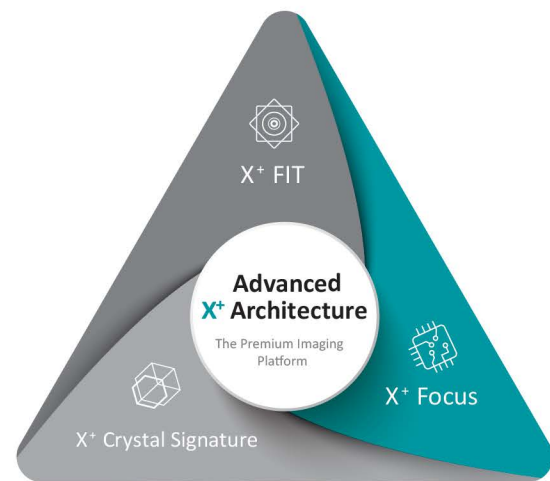


ALPINION's Imaging technology

* Advanced X⁺ Architecture is available for X-CUBE 90/70 with Elite



Advanced X⁺ Architecture

X⁺ FIT

The sophisticated parallel beamforming technology X⁺ FIT, improves contrast and uniformity for excellent resolution by transmitting, receiving and processing a large amount of data. X⁺ FIT promises high image quality for your patient care.

X⁺ Focus

X⁺ Focus is the new image processing technology that displays a clearer image. It brings optimal image quality by enhancing true clinical information and suppressing unnecessary noise and other artifacts.

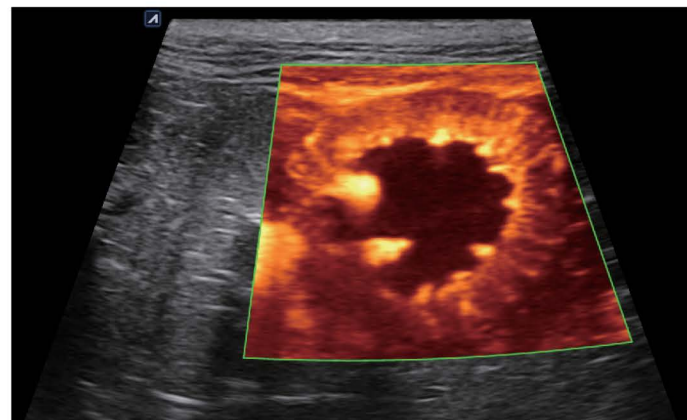
X⁺ Crystal signature

With the use of an upgraded single crystal material, it improves transmittance. In addition, Alpinion's innovative backing material minimizes signal loss, improving penetration and image quality. This new technology delivers high sensitivity and penetration.

Diagnostic Features

X⁺ Microview

X⁺MicroView is the vascular imaging mode which displays micro blood flow. Users can observe the low speed blood flow of tiny blood vessel. This technology allows for accurate diagnosis by showing a low-velocity blood flow that has not been seen in the Color Doppler at a high frame rate.



DPDI

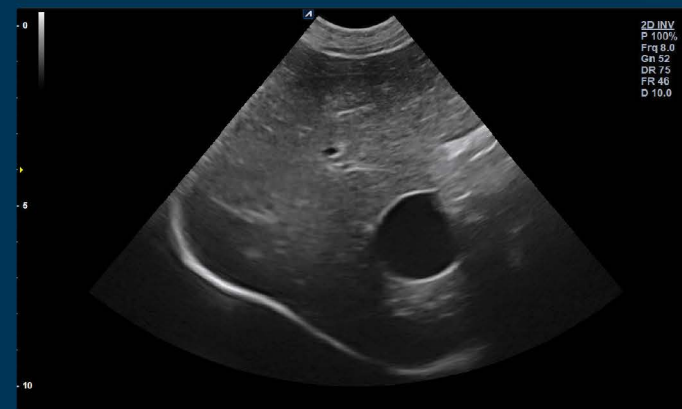
It is Power Doppler technology that shows blood flow direction information together with higher sensitivity than Color Doppler. It is useful for detecting the slow blood flow rate of peripheral blood vessels. (e.g. renal blood vessels, peripheral blood vessels, middle cerebral arteries, etc.)



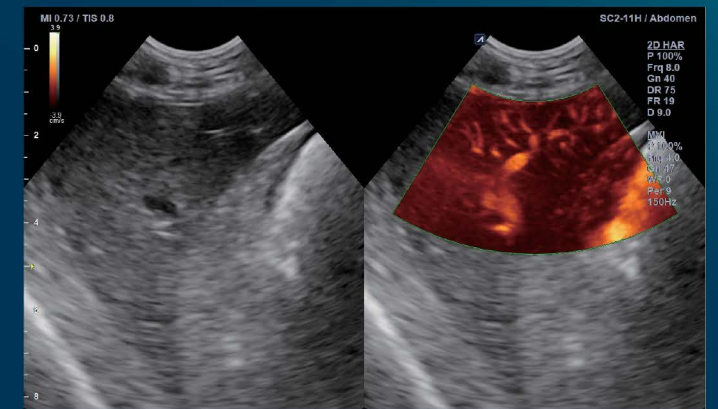
Ultrasound System for Veterinary Care



Excellent Imaging Quality increases your diagnostic confidence



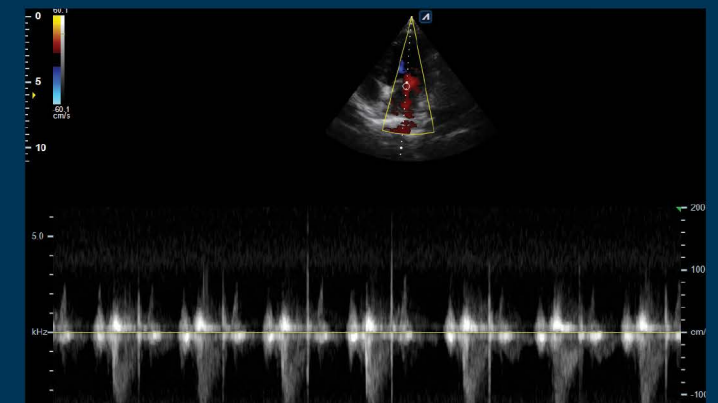
Gallbladder in 2D



Liver in X⁺ MicroView



Renal in CF Mode



Echo in CW Mode

Discover the Most Valuable Veterinary Ultrasound System for Companion Animals



ALPINION offers a high-performance and qualified systems.

Combinations of a vast range of features and the powerful architecture provides excellent image quality, resulting in a diagnostic exam in rapid time.



XCUBE 90 with *Elite*



XCUBE 70 with *Elite*



XCUBE 60



XCUBE i9



XCUBE i8



MINISONO

Main Features

- SWE
- ATI
- Brilliant Flow
- X⁺ MicroView
- X⁺ Assistant
- X⁺ Compare
- USB Real-time recording

- SWE
- ATI
- Brilliant Flow
- X⁺ MicroView
- X⁺ Assistant
- X⁺ Compare
- USB Real-time recording

- Brilliant Flow
- X⁺ MicroView
- X⁺ Assistant
- X⁺ Compare
- USB Real-time recording

- X⁺ MicroView
- X⁺ Assistant
- X⁺ Compare
- USB Real-time Recording

- X⁺ MicroView
- X⁺ Assistant
- X⁺ Compare
- USB Real-time Recording

- X⁺ MicroView
- X⁺ Assistant
- X⁺ Compare
- USB Real-time Recording

Transducers

- SC2-11H
- SL3-19X
- SL3-19H
- L3-8H
- L3-12X

- SC2-11H
- SL3-19X
- SL3-19H
- L3-8H
- L3-12X

- SC2-11H
- SL3-19X
- L3-12X
- L3-15H
- L10-25H
- P1-5CT

- SC2-11H
- SL3-19H
- L3-8H
- IO7-18
- L10-25H
- MP1-5X
- SP3-8T

- SC2-11H
- L3-8H
- L3-12T
- P1-5CT

- C1-6
- L3-12

SC2-11H



SL3-19X



SL3-19H



L3-15H



L3-12X



L3-12T



IO7-18



L10-25H



SP3-8T



MP1-5X



P1-5CT

